



CULLEN RESOURCES LIMITED

ABN 46 006 045 790

www.cullenresources.com.au

ASX Symbol: CUL

4 May 2016

“Reservation Notification” application for Lithium Exploration in Finland

Highlights

- Cullen Resource Limited (“Cullen” or the “Company”) has lodged a **Reservation Notification** application of ~440km² in the **Central Ostrobothnia** lithium province of Finland in the name of its Finnish subsidiary company – Cullen Finland Oy.
- This **Reservation Notification** application, if approved, would give Cullen the priority, within a four month to two year period from lodgement (actual reservation time period to be determined by Finnish Mining authorities), to make applications for **Exploration Permits** (required for any ground disturbing exploration programs).
- Cullen’s Reservation Notification application area surrounds known spodumene-bearing pegmatites with defined resources, owned by Finnish Company Keliber Oy (www.keliber.fi) – see location of deposits in Figure 1 below.
- The Geological Survey of Finland (GTK) has re-assayed its regional till geochemical samples from the **Kaustinen, Central Ostrobothnia** area (collected in the 1970’s) for lithium*. The resulting distribution of Lithium (Li) in till, shown in Figure 1 below, in Cullen’s opinion suggests good prospectivity for new discoveries of lithium-bearing pegmatites surrounding the known deposits owned by Keliber Oy and within Cullen’s Reservation Notification application area.

*(Timo Ahtola (ed.), Janne Kuusela, Asko Kapyaho and Olavi Kontoniemi, Geological Survey of Finland, Report of Investigation, 220, 2015: “Overview of lithium pegmatite exploration in the Kaustinen area in 2003-2012”).

Note - “till” = unsorted glacial sediment

REGISTERED OFFICE: Unit 4, 7 Hardy Street, South Perth WA 6151.

Telephone: +61 8 9474 5511 Facsimile: +61 8 9474 5588

CONTACT: Dr. Chris Ringrose, Managing Director. E-mail: cringrose@cullenresources.com.au

- Cullen will now proceed to investigate the Reservation Notification application area more fully in the coming months of the northern hemisphere summer. This will identify and prioritise areas for further exploration under Exploration Permits. Cullen notes that a Reservation Notification application generally takes 2 – 4 weeks to approve, but may be longer, and an Exploration Permit normally takes about six months for approval.
- Cullen’s initial work will proceed from a review and compilation of available geological, geophysical, geochemical and previous exploration data to field mapping and sampling, to be undertaken mainly by Finnish consulting geologists. Finland is known for the depth and quality of its publically available geological databases which will assist Cullen in this regard.

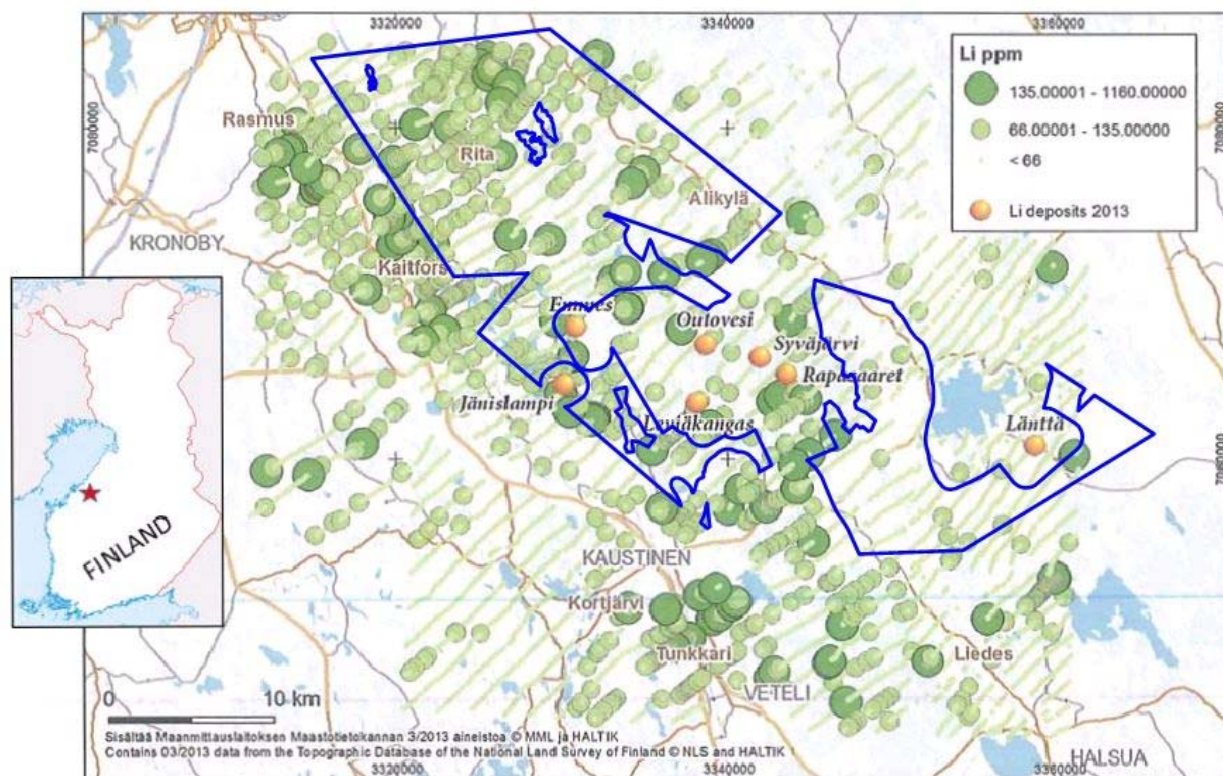


Fig.1: Figure 13 from Geological Survey of Finland Report, 220*, showing till assays of lithium – up to 1160 ppm (area of anomalies measures ~ 50 x 20 km) with Cullen’s Reservation Notification application area shown in blue outline which takes into account geology, existing tenure, cultural features and areas of restricted access (Natura 2000). The glacial flow direction at Kaustinen is from NW to SE about 150-160°.

Cullen’s Managing Director Chris Ringrose commented: “Cullen has had significant previous experience prospecting and exploring in Finland and has good contacts with well-regarded geological consulting groups based in Scandinavia to facilitate efficient operations in what is generally regarded as a very attractive jurisdiction for exploration and mining.”

Dr Chris Ringrose, Managing Director

4 May, 2016

REGISTERED OFFICE: Unit 4, 7 Hardy Street, South Perth WA 6151.

Telephone: +61 8 9474 5511 Facsimile: +61 8 9474 5588

CONTACT: Dr. Chris Ringrose, Managing Director.

E-mail: cringrose@cullenresources.com.au

ABOUT CULLEN: Cullen is a Perth-based minerals explorer with a multi-commodity portfolio including projects managed through a number of JVs with key partners (Fortescue, APIJV (Baosteel/Aurizon-AMCI/Posco), Hannans Reward, and Matsa), and a number of projects in its own right. The Company's strategy is to identify and build targets based on data compilation, field reconnaissance and early-stage exploration, and to pursue further testing of targets itself or farm-out opportunities to larger companies. Projects are sought for most commodities mainly in Australia but with selected consideration of overseas opportunities

ATTRIBUTION: **Competent Person Statement**

The information in this report that relates to exploration activities is based on information compiled by Dr. Chris Ringrose, Managing Director, Cullen Resources Limited who is a Member of the Australasian Institute of Mining and Metallurgy. Dr. Ringrose is a full-time employee of Cullen Resources Limited. He has sufficient experience which is relevant to the style of mineralisation and types of deposits under consideration, and to the activity which has been undertaken, to qualify as a Competent Person as defined by the 2012 edition of the "Australasian Code for Reporting of Exploration Results, Mineral Resources and Ore Reserves". Dr. Ringrose consents to the report being issued in the form and context in which it appears.

Information in this report may also reflect past exploration results, and Cullen's assessment of exploration completed by past explorers, which has not been updated to comply with the JORC 2012 Code. The Company confirms it is not aware of any new information or data which materially affects the information included in this announcement.