

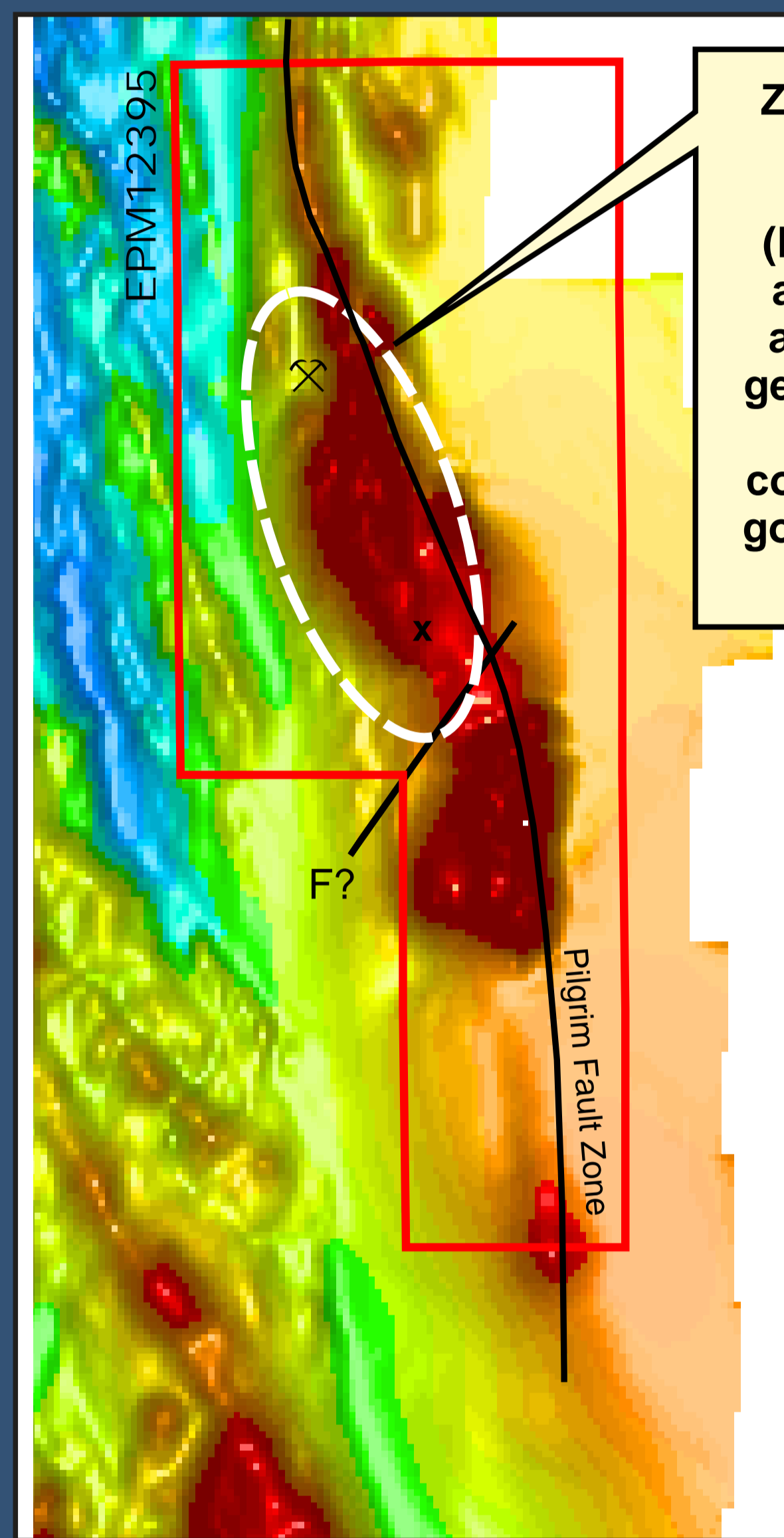
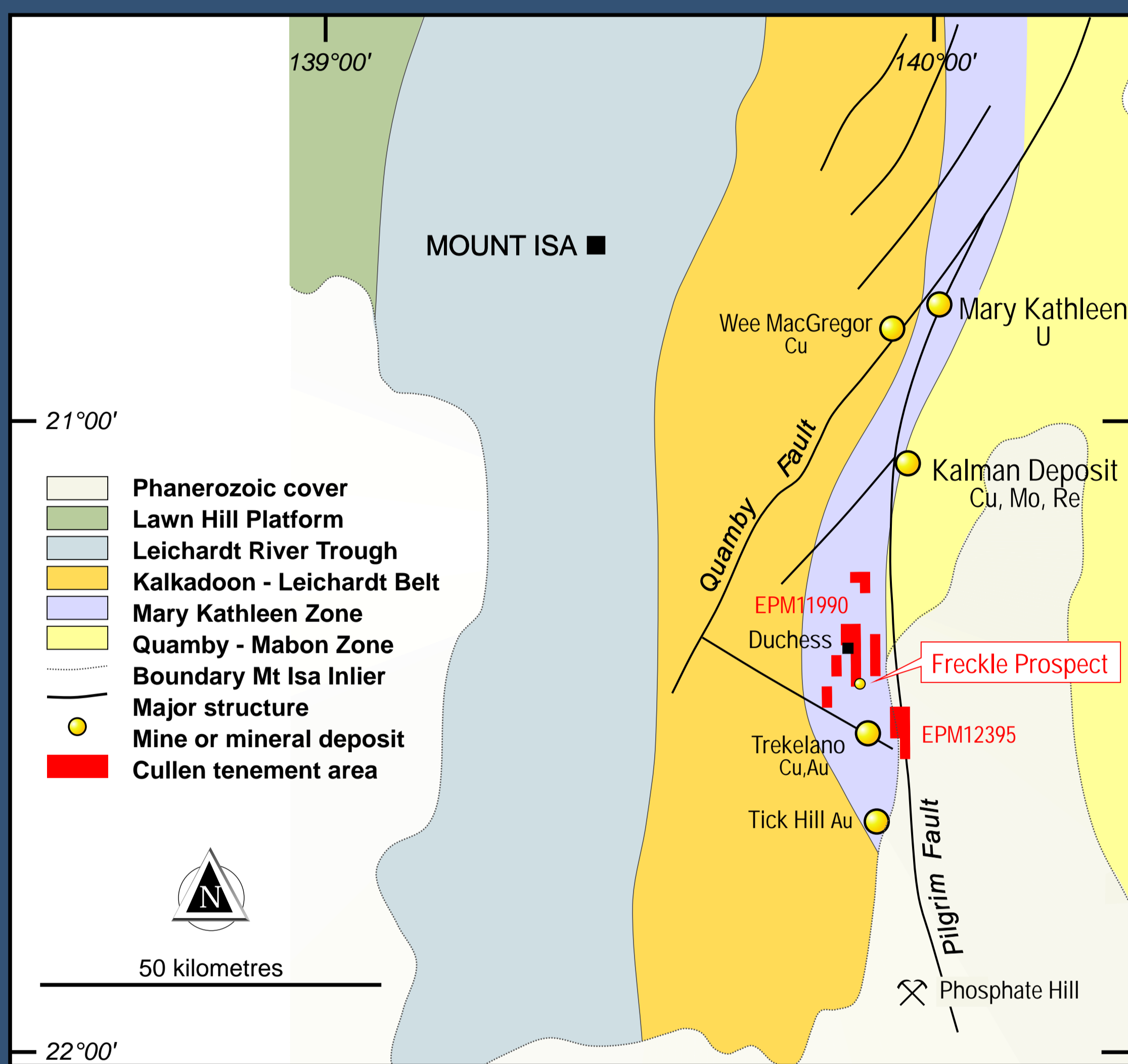


Cu-Au PROSPECTS

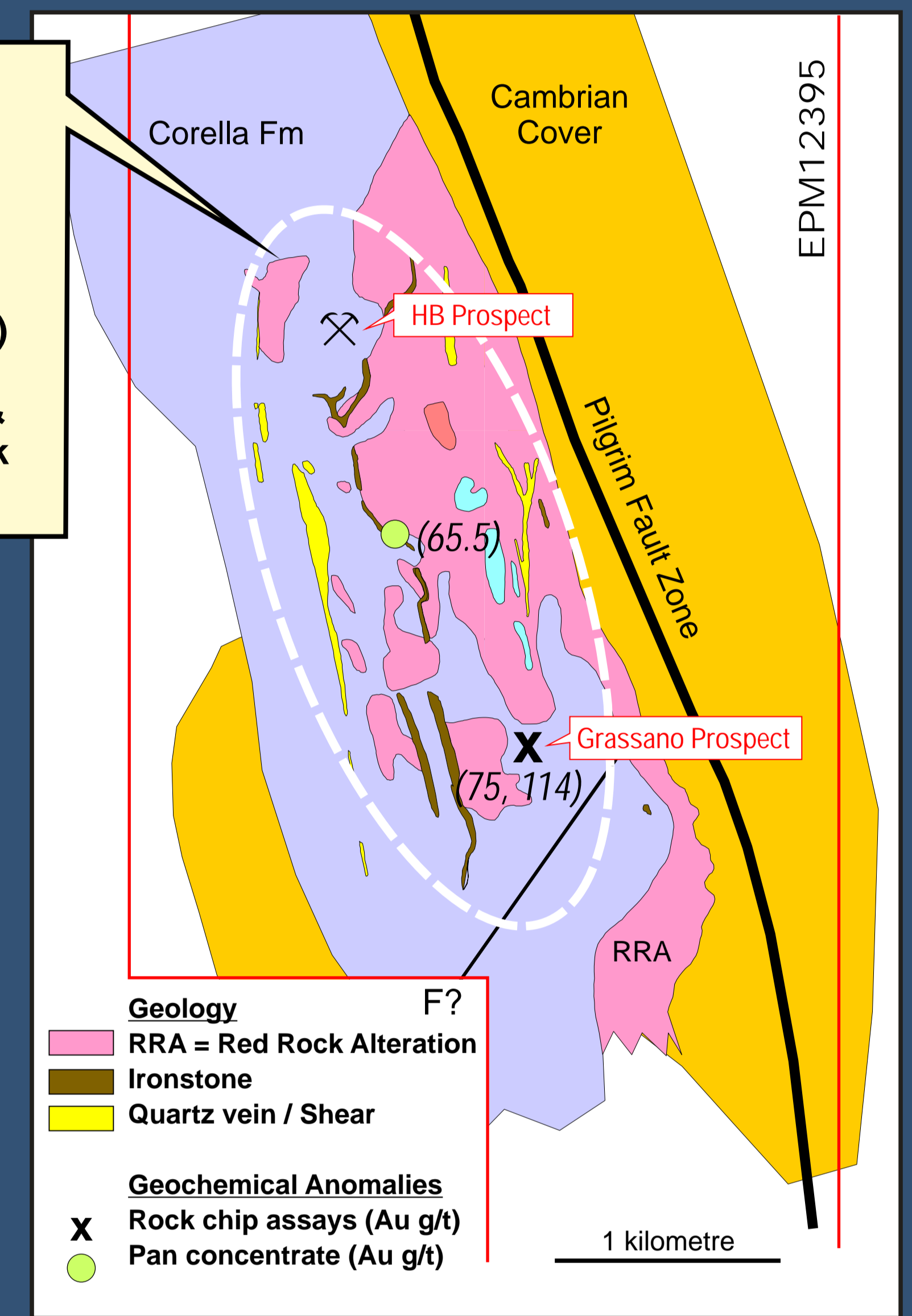
DUCHESS - QLD



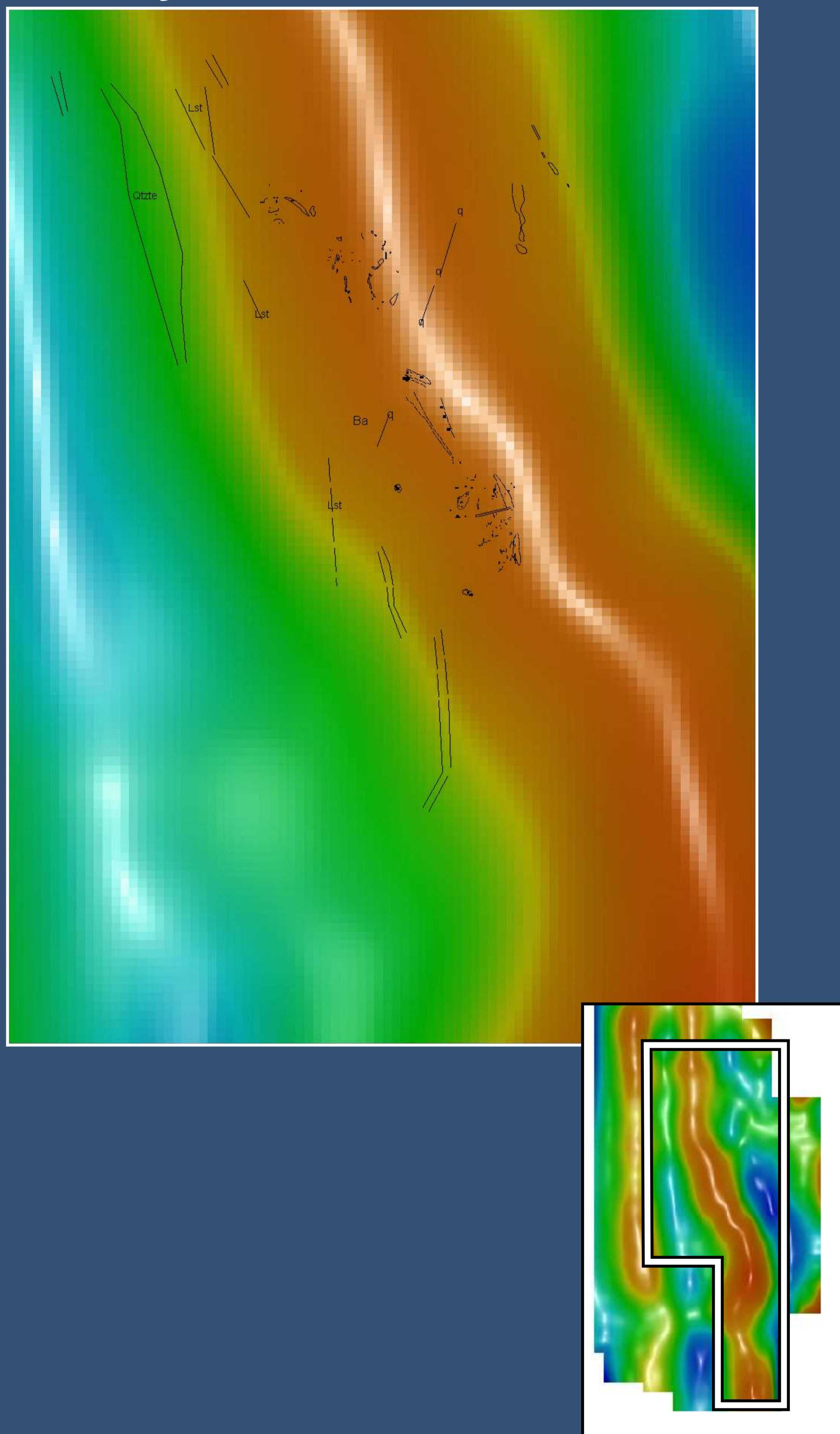
- ▲ Pilgrim Fault Zone with IOCG style red rock alteration, quartz-hematite, quartz-magnetite infill
- ▲ Selwyn style Cu+/-Au mineralization at truncation of N-S quartz-hematite lodes by NE trending structures
- ▲ Multiphase brecciation, quartz veining and Cu+/-Au mineralization
- ▲ High level Au in brecciated, colloform quartz veins shows mineralization has been active over long time period



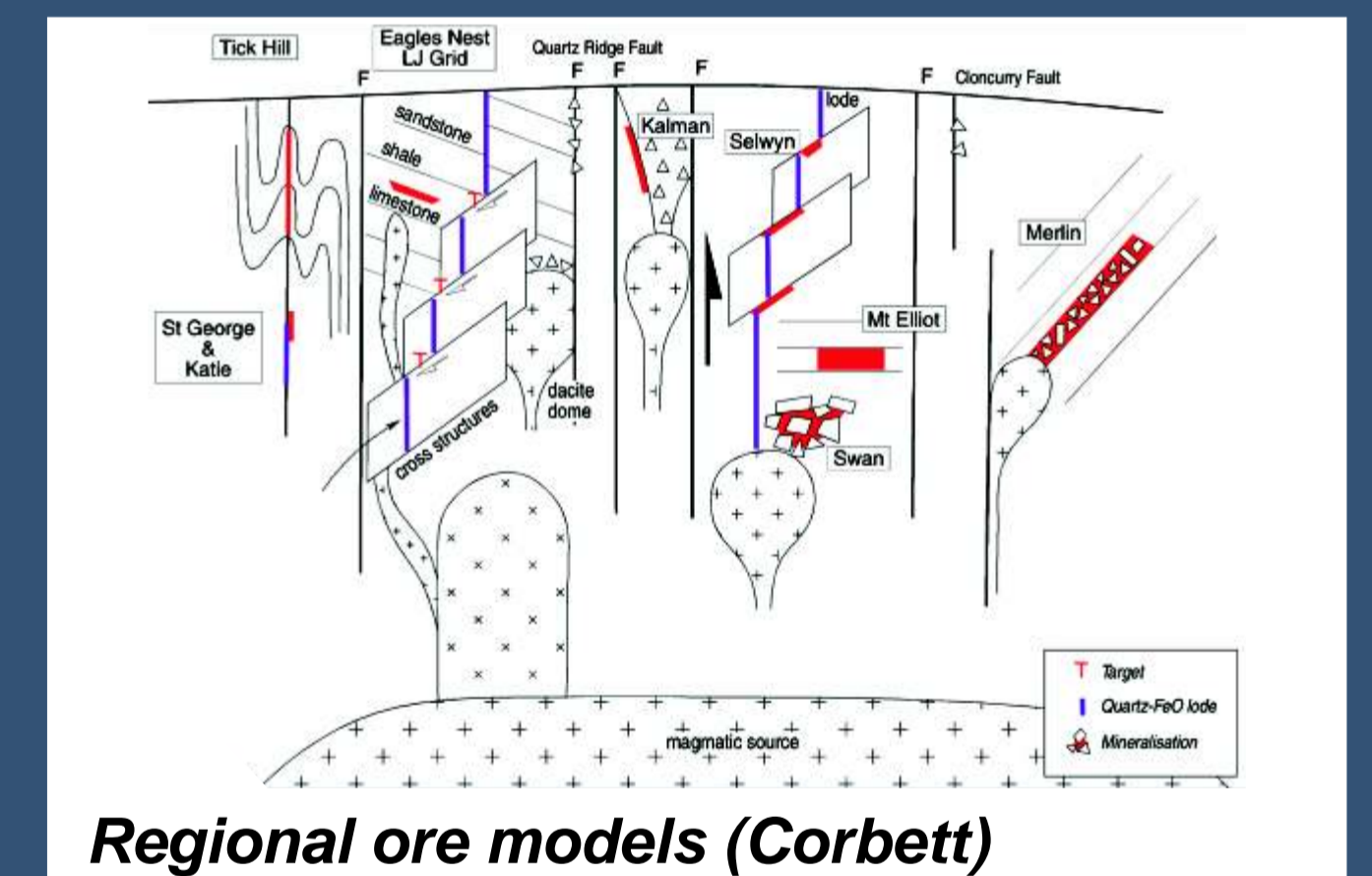
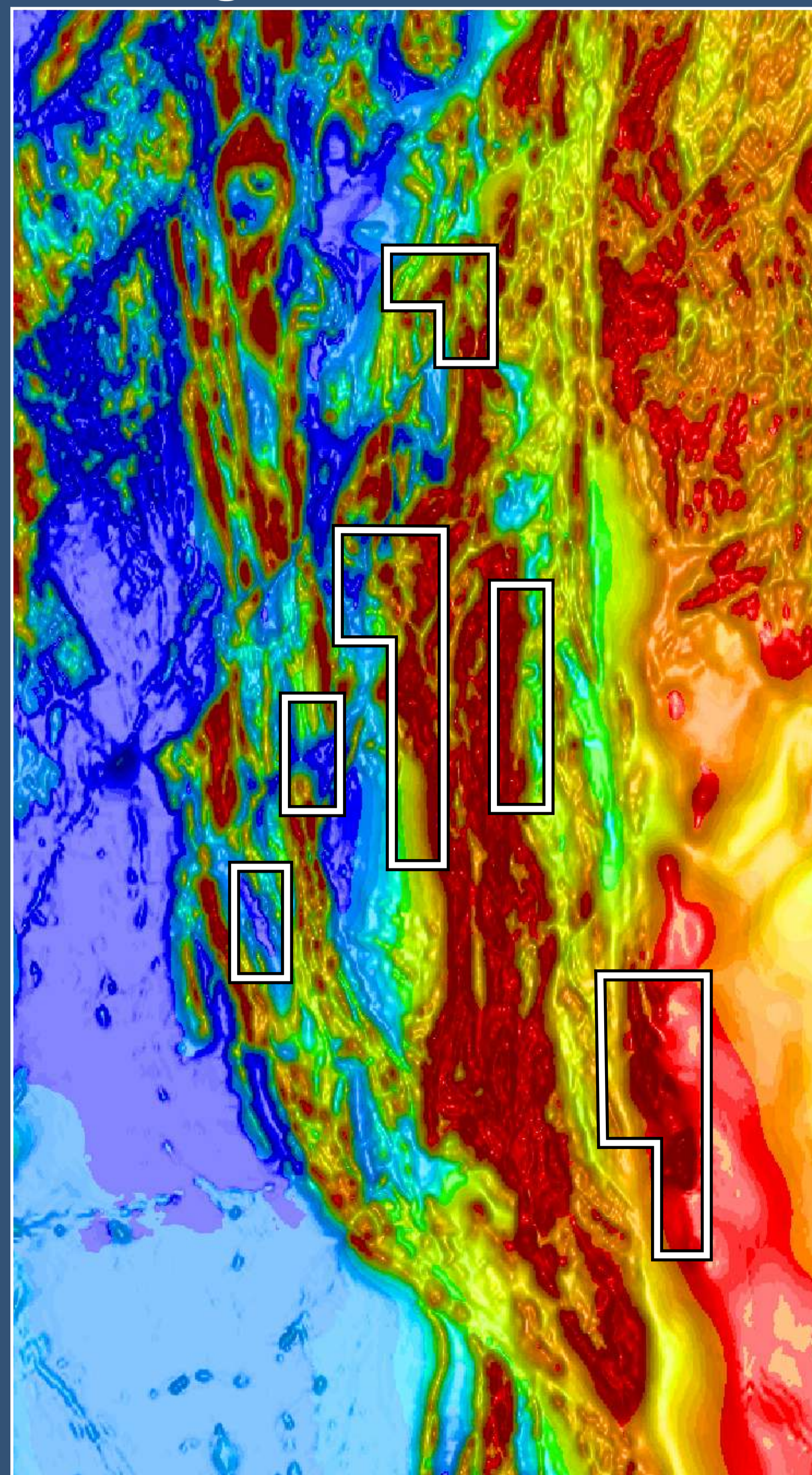
Zone of +0.1g/t Au in panned concentrates (Freeport), area of advanced argillic alteration (CSIRO geospectral survey) and numerous copper (to 17.4%) & gold (to 114g/t) rock chip anomalies



Gravity



Aeromagnetics



Regional ore models (Corbett)



Silica-hematite outcrop



Red rock breccia



Brecciated colloform quartz hematite vein (114 g/t Au)